



SG60 & BEYOND

ANNUAL REPORT 2025





is a charity with IPC status that feeds the less-fortunate through its food distribution programmes. It was established in February 2003 after Singapore-based Austrian couple Henry and Christine Laimer read a report in The Sunday Times about bakeries discarding their unsold bread. Stirred, they then decided to collect and redistribute surplus bread from bakeries to those in need. Food from the Heart is Singapore's foremost independent food charity devoted to alleviating food insecurity through efficient distribution of food in a sustainable manner; while making a significant impact on food waste reduction.

CORPORATE INFORMATION

Food from the Heart (FFTH) was registered as a company limited by guarantee on 13 November 2007.

FFTH was registered as a charity under the Charities Act (Chapter 37) since 1 August 2008.

FFTH has been accorded IPC (Institute of a Public Character) status from 1 February 2024 to 31 August 2026.

IPC Registration No: IPC 000634
IPC Registration Date: 1 August 2008

FFTH has Rules and Regulations as its governing instrument.

Unique Registration Number (UEN)
200721064R

Registered Address
9 Raffles Place, #24-01 Republic Plaza, Singapore 048619

Office Address
130 Joo Seng Road #03-01 Singapore 368357

Auditors
RSM SG Assurance LLP

Bankers
DBS Bank Ltd
United Overseas Bank

Lawyers
Luther LLP

CONTENTS

03

MESSAGE FROM
OUR CHAIRMAN

04

OUR BOARD

07

A YEAR IN
REVIEW

10

OUR IMPACT

12

YEAR ON YEAR
SNAPSHOT

14

OUR
PROGRAMMES

24

OUR
INITIATIVE

26

OUR
SIGNATURE
EVENTS

37

OUR
DONORS AND
SPONSORS

46

AUDITED
FINANCIAL
INFORMATION
2025

49

THE YEAR AHEAD

50

WHO DO WE
HELP?

51

DONATE RIGHT!

52

VOLUNTEER
APPRECIATION
DINNER

53

MEET THE TEAM

54

A FEW WORDS
FROM OUR CEO

Member of



OUR VISION

To be the leading charity in Singapore devoted to alleviating food insecurity through efficient distribution of food.

OUR MISSION

To alleviate food insecurity by providing reliable, consistent and sustainable food support to the less-fortunate through food distribution programmes.

OUR VALUES

As we work towards our mission, we embrace the values of professionalism, efficiency, transparency and self-sustainability.



OUR SHARED PURPOSE SHARING HOPE. NOURISHING LIVES

MESSAGE FROM OUR CHAIRMAN



In 2025, Singapore marked its 60th year of independence. Rising from modest beginnings to become a developed nation, Singapore is rightly proud of its accomplishments over those six decades. Food from the Heart also began with humble roots from a simple act of redistributing surplus bread to the less-fortunate, and has become a major food distribution charity. We have created a microsystem that brings together philanthropists, donors, community partners, corporations and volunteers through our work, towards a shared purpose of nourishing lives and uplifting those in need.

Over the past year, we strengthened our programmes to better support lower-income families and vulnerable individuals. Challenged by inconsistent access to adequate safe, and nutritious food, they often have to stretch their groceries at the expense of their health. To that end, we served 70,000 beneficiaries by distributing \$9.7 million worth of food.

Beyond numbers, Food from the Heart focuses on quality. We increased the availability of fresh produce, protein, and nutrient-dense items in our Community Food Pack, Community Shop, and School Goodie Bag programmes. We champion not only fuller plates, but also *healthier lives*. We prioritise dignity at the heart of what we do. At our Community Shops, beneficiaries can choose the food that best meets their needs, giving them greater independence and respect. At the same time, through our other two programmes, Bread Run and Market Place, our efforts to nourish lives by redistributing surplus food result in significant food waste reduction. Together, our five programmes work seamlessly to advance sustainable solutions to food insecurity.

We stay committed to efficiency, transparency and accountability. Every contribution creates a meaningful impact to communities in need. On behalf of the Board, I thank all who have supported us. Your generosity empowers our mission and fuels our shared purpose. Additionally, my heartfelt thanks to Linda Soo-Tan, who stepped down from the Board of Directors in 2025, for a decade of dedicated service.

As we look ahead to 2026, we remain hopeful that you will stand with us to share hope and nourish lives today and for future generations.

Ronald P. Stride

OUR BOARD

Food from the Heart is steered by its board members, each of whom are recognised individuals in their respective fields and professions. Their combined experience and network has led the sustainable growth of the charity since it was founded in 2003.



MR RONALD STRIDE
Chairman (8/8*)

Appointed since August 2009

Retired Senior Managing Partner and banking specialist at management consultancy Booz Allen & Hamilton.



MR STEVEN LUK
Treasurer (8/8*)

Appointed since June 2023

Fellow Chartered Accountant and Accredited Tax Advisor (Income Tax and GST), founder of Coleads Business Consultants Pte Ltd, and independent director for companies including Singapore subsidiaries of listed and multinational corporations.



MR JAN ZIMMER
Secretary (7/8*)

Appointed since September 2024

German lawyer at Luther LLP Singapore, specialising in global transportation, trade and related insurance, focused on advising European companies on investments and restructuring in Singapore and the Asia-Pacific region.



DATO' ANDY KUEK
Board Member (3/8*)

Appointed since March 2019

Founder, Chairman and CEO of Grand Columbia Group of companies, active across Asia Pacific in finance, banking, insurance, property investment, and development.



MR CHONG IK WEI
Board Member (6/8*)

Appointed since September 2024

Partner and Asia Managing Director at international law firm Clyde & Co, specialising in transportation, insurance, and energy-related dispute resolution work and arbitrations across Asia.



MR EUGENE YANG
Board Member (6/8*)

Appointed since December 2014

Managing Director and Market Head for the Ultra High Net Worth (UHNW) Group at EFG Bank, Singapore.



MR MAHESH BUXANI
Board Member (8/8*)

Appointed since June 2018

A leader in international export trade and former Chairman of the Indian Chamber of Commerce in Hong Kong.



MR MIKE BOOKER
Board Member (4/5*)

Appointed since June 2025

Advisory Partner with Bain & Company, with prior experience as Senior Partner and APAC Head of Consumer and Retail Practices.



MS OOI HUEY TYNG
Board Member (4/8*)

Appointed since February 2023

Accomplished finance and banking professional, independent directors of multiple boards including AIG Asia Pacific, Maxis Berhad, and Governing Council of Singapore Institute of Directors. Former MD and Head of GrabPay, SEA.



MS STEPHANIE ONG
Board Member (6/8*)

Appointed since September 2024

Senior Banker, Director at Citi Private Bank Singapore and an active volunteer as Grassroot leader and member of the Community Club Management Committee.

Directors who have served the board for more than 10 years:

1. Mr Ronald Stride was re-elected for his vital leadership role in continuing to grow, govern and guide the Charity.
2. Mr Eugene Yang was re-elected for his valuable technical financial advice and support towards fundraising.

* Number of Board Meetings Attended/ Held in 2025.
Information is correct as at 31 March 2026.

OUR BOARD

SUCCESSION PLANNING

BOARD COMPOSITION	SUCCESSION APPROACH	ACTION
Officer Chairman	<ul style="list-style-type: none"> Evaluate leadership and tenure 	<ul style="list-style-type: none"> Current Chairman ends tenure in 2026
Directors at large greater than 10 years One director	<ul style="list-style-type: none"> Evaluate contribution and support of charity Cannot serve as Chair of board committees 	<ul style="list-style-type: none"> To be evaluated for re-appointment at AGM in 2026 based on continuing contribution to charity
Directors at large less than 10 years Eight directors	<ul style="list-style-type: none"> Serve for 10 years, as long as personal and professional situations permit Submit for performance evaluation and re-appointment at AGM Serve as board committee Chairs 	<ul style="list-style-type: none"> Submit for evaluation and reappointment at AGM in 2026

Notes:

- Term of service for board member is one year.
- All board members are eligible for re-appointment annually at AGM.
- All board members serve on the board committees.
- As a large charity, Food from the Heart is required to have 10 board members.
- In 2025, one new director was appointed to the board.

COMMITTEES

FINANCE

- Chair** • Mr Steven Luk
- Members** • Mr Chong Ik Wei
• Mr Mahesh Buxani
• Mr Ronald Stride

HUMAN RESOURCES

- Chair** • Mr Mahesh Buxani
- Members** • Dato' Andy Kuek
• Mr Mike Booker
• Ms Ooi Huey Tyng
• Mr Steven Luk

AUDIT

- Chair** • Ms Ooi Huey Tyng
- Members** • Dato' Andy Kuek
• Mr Eugene Yang
• Mr Jan Zimmer
• Ms Stephanie Ong

FUNDRAISING

- Chair** • Mr Mike Booker
- Members** • Mr Chong Ik Wei
• Mr Eugene Yang
• Mr Ronald Stride
• Ms Stephanie Ong

A YEAR IN REVIEW

18 JAN



Chinese New Year Food Donation Drive

Kicked off the new year right at our annual food drive at Community Shop @ Punggol, where we exceeded our target by raising over 6,000 food items!.

22 FEB



Official Community Shop @ Chong Pang Opening Event

Joining us were Grassroots Adviser Mr K Shanmugam, Minister for Home Affairs and Minister for Law, our Chairman, Board of Director and CEO, sponsor BNP Paribas, as well as Globalpoint Far East, community leaders, volunteers and supporters.

14 MAR



Gan Eng Seng School Visit

Concluding its 140th anniversary celebration with the "140 Good Deeds Initiative," during which students organised a food donation drive and a visit to learn more about our work.

14 APR



Driving Change with Sime Motors and Performance Motors

A YEAR IN REVIEW

19 APR



SIA Engineering Company Charity Run

APR-MAY



Collaboration with the Health Promotion Board (HPB)

HPB Ambassadors visited our Community Shops to support our beneficiaries in making informed food choices for a healthier lifestyle.

18-20 OCT



Everton Park Food Donation Drive

Four well-loved homegrown brands in Everton Park — Dearborn, LR Boulangerie, Morimori Yogashi, and Nylon Coffee — hosted a joint food drive to commemorate SG60 and World Food Day.

19-25 DEC



All Wrapped Up in the Holiday Spirit

To raise funds for our charity, volunteers stepped in to wrap gifts at Toys “R” Us outlets in JEM and VivoCity.

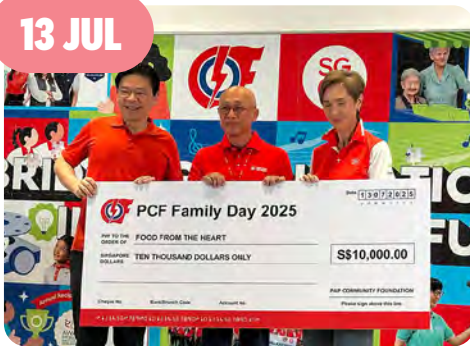
28 JUN



Celebrating Tong Seng Produce’s 35th Anniversary

In the spirit of “Good Man, Good Deed, Good Rice,” Tong Seng Produce invited its partners to contribute to Food from the Heart, raising close to \$60,000.

13 JUL



Donation from PAP Community Foundation

17 AUG



National Day Food Donation Drive

United in solidarity, Singaporeans donated food at our Community Shop @ Boon Lay.

6 SEP



National Harley Day

Harley-Davidson riders from across Asia Pacific rallied together in Singapore for the inaugural “United We Ride” initiative, raising funds for charities across the region, including Food from the Heart.

31 JUL



Outreach at Bakers’ Symposium 2025

An opportunity for us to share our Bread Run and Market Place programmes with stakeholders in the food industry where surplus food can be transformed into nourishment.

JUL-AUG



FairPrice SG60 Heart Bundle

From 1 July to 1 August, members of the public could sponsor a food bundle while shopping for groceries on FairPrice’s website and app.

A YEAR IN REVIEW

OUR IMPACT

\$9,705,781

WORTH OF FOOD DISTRIBUTED



**FFTH
COMMUNITY
FOOD PACK**



\$4,043,006



**FFTH
COMMUNITY
SHOP**



\$1,687,327



**FFTH
SCHOOL
GOODIE BAG**



\$1,354,795



**FFTH
BREAD
RUN**



\$2,425,856



**FFTH
MARKET
PLACE**



\$194,797

OUR IMPACT

70,470



Beneficiaries supported

22,930



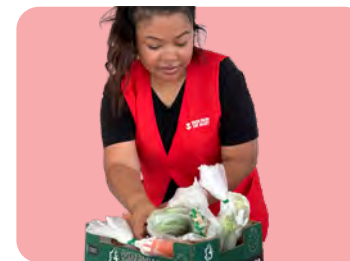
Households supported

163,014



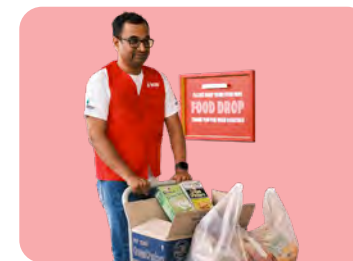
Food packs distributed

390



Food distribution points

84,007



Volunteering hours

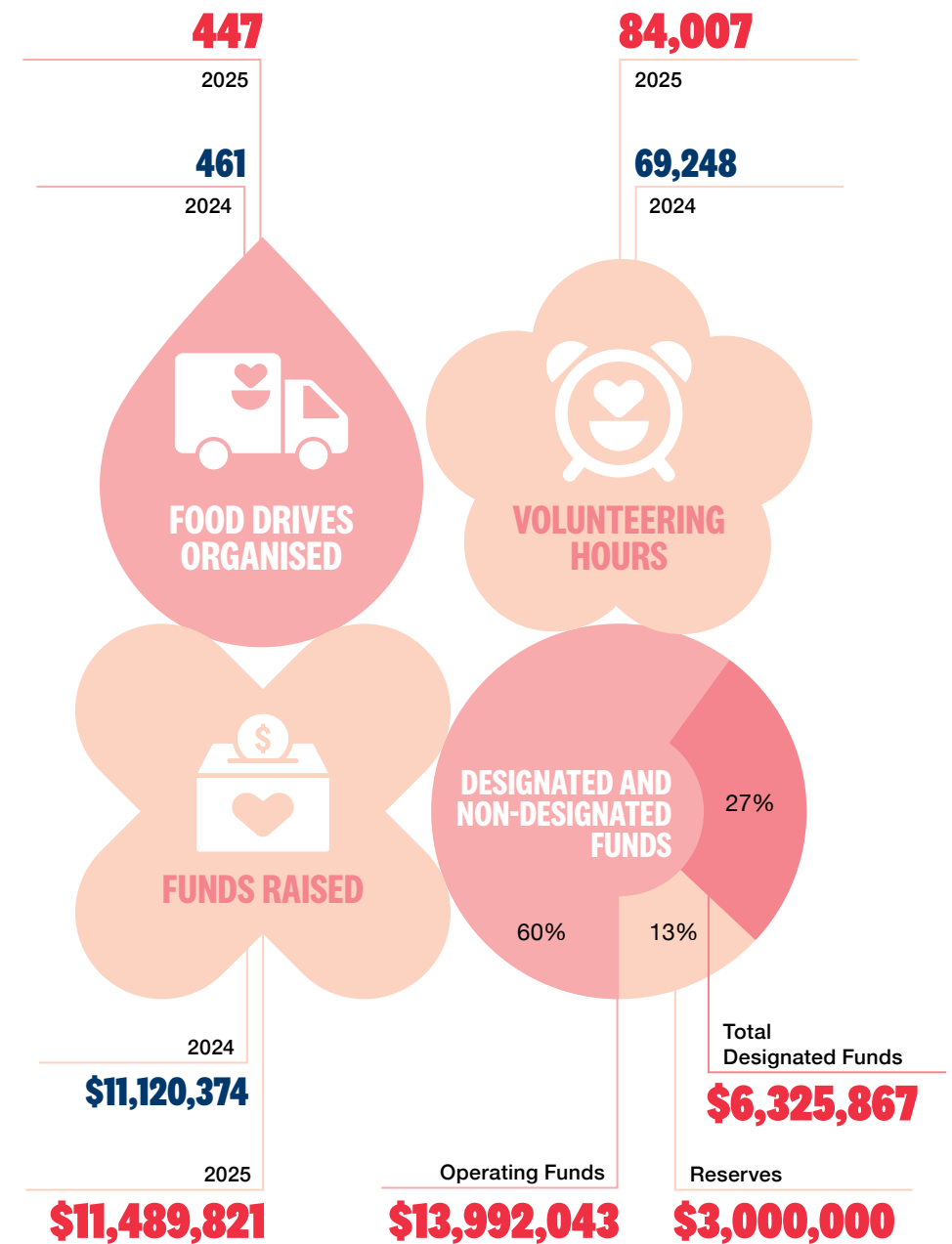
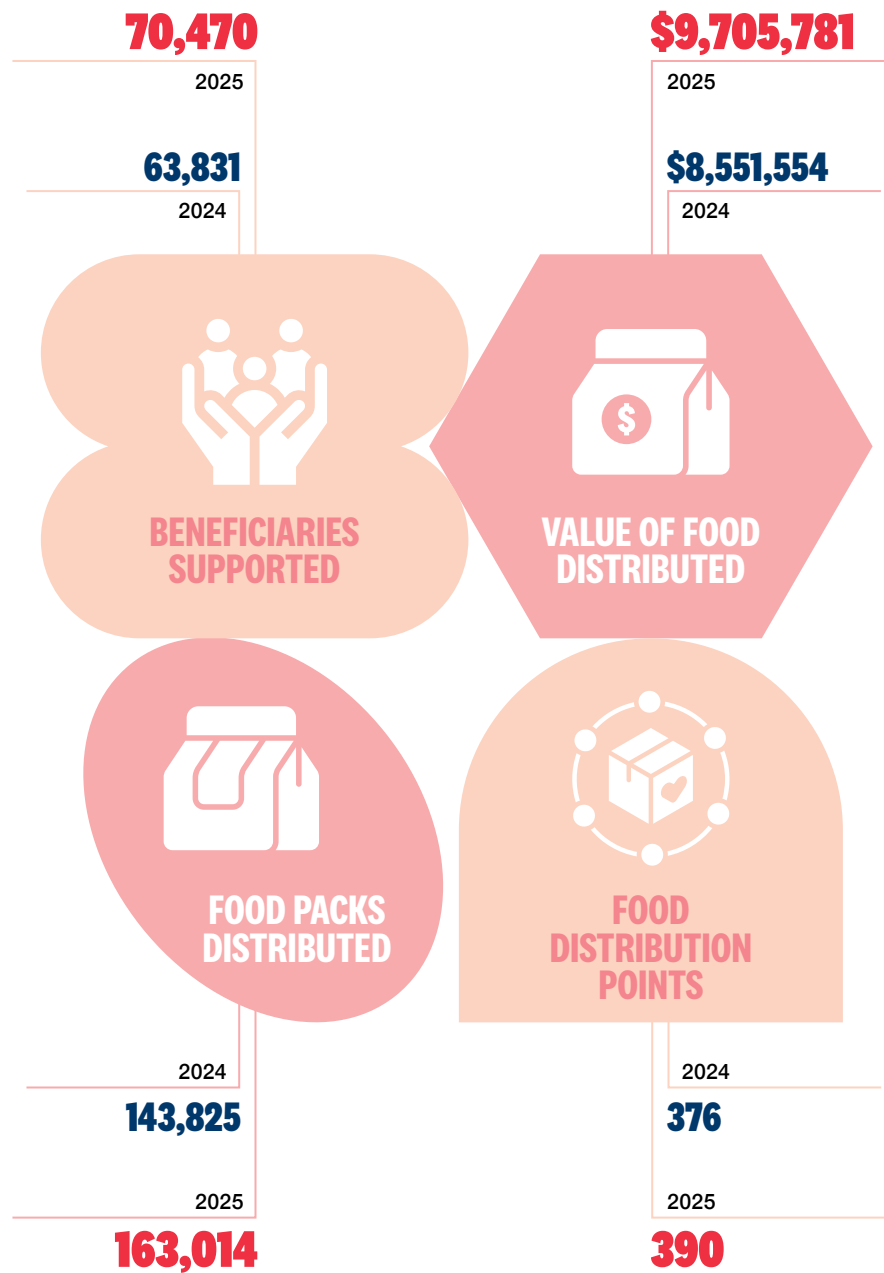
447



Food donation drives organised

YEAR ON YEAR SNAPSHOT

YEAR ON YEAR SNAPSHOT



OUR PROGRAMMES



RELIABLE SUPPORT, EVERY MONTH

ENHANCEMENTS
To increase the nutritional value of our food packs, oats and Milo are now included as monthly items

Families stretch every dollar by prioritising satiety – filling meals that last longer – over fresh and healthier options. Over time, this leads to nutritional gaps and health challenges.

The Community Food Pack programme supports lower-income individuals and families with a steady supply of rice, canned goods, and nutritious staples. It relies on food donations, cash contributions, bread from our Bread Run programme, and the dedication of hardworking volunteers who assist with sorting and packing. Each month, over 10,000 families receive food aid through our Community Partners.

When money is tight, food choices are often dictated by price rather than nutrition. Fresh fruits, vegetables, and eggs are supplemented to balance nutrition with satiety. The food pack received by seniors includes fortified milk, while dialysis patients receive curated packs tailored to their diets.

125
DISTRIBUTION POINTS

100,308
FOOD PACKS

10,460
FAMILIES

OUR PROGRAMMES

YOUR GROCERIES, YOUR CHOICE

Our Community Shop programme offers a unique shop-for-free experience, where families and seniors in need can select the groceries they truly need, empowering them with choice, dignity, and healthier meals.

This programme aligns with our long-term approach to food support by providing beneficiaries with targeted food aid and better access to fresh, nutritious food, empowering them to make choices and lead healthier lives. Beneficiaries also enjoy shopping and connecting with the volunteers and neighbours.

Piloted in February 2020 at Mountbatten, four more Shops have opened in Boon Lay, Lengkok Bahru, Punggol and Chong Pang. Combined, the five Shops served over 12,000 beneficiaries.

The Community Shop is open on Tuesday, Thursday and Saturday from 9:30 am to 12:30 pm.

Mdm Lee

HOW DOES IT WORK?

1. BROWSE

Beneficiaries can visit the Community Shop in their neighbourhood to explore and choose from a range of essential items. They can make multiple visits throughout the month.

2. REDEEM

Each month, beneficiaries can redeem up to 14 items:

- 12 non-perishable food items such as rice, canned food, oats, biscuits, and eggs
- 2 fresh produce items such as vegetables, thanks to our RWS Eat Well @ Community Shop partnership

3. SCAN & SUPPORT

Redemptions are tracked using each beneficiary's Food from the Heart card. This helps us reduce food wastage, better understand beneficiaries' needs, and improve future food aid planning.

Many families living on limited incomes struggle with rising food prices and limited access to fresh, nutritious meals. The Community Shop helps bridge this gap by offering a wide range of essentials, allowing beneficiaries to shop for what they truly need.

5
COMMUNITY SHOPS

3,838
FAMILIES



EMPOWERING CHOICE

Dignity of choice to choose food items that they want and need



MINIMISING FOOD WASTE

Higher likelihood of finishing all the items they chose, resulting in less food waste



EFFICIENT ALLOCATION

All food donations received through each Shop's 24/7 food drop are redistributed to those in need



DATA-DRIVEN SUPPORT

Digitally gathered data on consumption patterns and dietary habits helps us improve our giving, and shape the future of food security

OUR PROGRAMMES



BETTER NOURISHMENT, BRIGHTER FUTURES



21 FOOD ITEMS TO SUPPORT CHILDREN'S GROWTH AND DEVELOPMENT, EVERY MONTH

Growing children need more than books to succeed. They need nutritious meals that support their well-being. Through the School Goodie Bag programme, we partner with 94 schools (51 preschools, 28 primary schools, and 15 secondary schools) to provide essential nourishment for underprivileged students to thrive in school and at home, and to build a stronger foundation for learning and life.

This year, we continued expanding the programme in preschools to improve the social mobility of younger children from disadvantaged backgrounds. The School Goodie Bag is also the first charitable food pack endorsed by the Health Promotion Board. Funded solely by cash donations, this curated food pack includes everyday items such as rice, oats, noodles, milk, and protein-rich foods. Currently, the programme supports over 8,500 beneficiaries.

When household budgets are stretched thin, groceries and nutrition often take a back seat. With reliable access to nutritious food, children have brighter moments and are nourished for their futures.

94
SCHOOLS

2,158
STUDENTS

20,843
SCHOOL GOODIE BAGS DISTRIBUTED

OUR PROGRAMMES

RESCUED BREAD, RENEWED HOPE

A KidneySG patient at their Dialysis Centre in Ghim Moh
Photo credit: KidneySG



Every day in Singapore, perfectly good bread is thrown away. Through the Bread Run programme, our volunteers collect and share surplus bread with families, children, and seniors who need it most, turning what would be waste into nourishment and care.

We strive to balance food surplus in the retail sector with community needs by working with an intricate network of hotels and bakeries, volunteers who collect and deliver the bread rain or shine, and community partners who pass on the bread to our beneficiaries. Since 2003, the programme has made a significant positive impact in reducing food wastage in Singapore. In 2025, the programme redistributed an estimated \$2.4 million worth of bread.

12,457
BREAD RUNS

199,064 KG
SAVED AND GIVEN OUT

15,475
HAPPY STOMACHS

“OUR PATIENTS ARE THANKFUL TO FOOD FROM THE HEART FOR THE BREAD DONATION, WHICH BRINGS SMILES AND A LITTLE EXTRA WARMTH TO THEIR DIALYSIS JOURNEYS.”

KidneySG

OUR PROGRAMMES



FROM SURPLUS TO SUSTENANCE



**OVER
\$2 MILLION
WORTH OF FOOD
REDISTRIBUTED
SINCE APRIL 2005**

Every day, supermarkets and retailers set aside perfectly good food that is near-expiry or with damaged packaging. Instead of letting it go to waste, they are upcycled through our Market Place programme and redistributed to welfare homes and families. This creates a win-win solution that helps those in need and supports environmental sustainability.

Plying monthly island-wide routes covering over 150 FairPrice supermarket outlets, perfectly edible food is given to those who need it instead of going to waste.

\$194,797
**WORTH OF ITEMS
SAVED AND GIVEN OUT**

30
WELFARE HOMES

1,135
BENEFICIARIES

OUR INITIATIVE



The Clean Plate Campaign was started in 2013 with a simple conviction: to reduce food waste, inculcate mindful eating, and encourage everyone to end each meal with a clean plate. This campaign is part of Food from the Heart's broader fundraising efforts to support our programmes.

In celebration of SG60 and World Food Day, we invited students to express their love for Singapore and its food heritage through art. From preschoolers' joyful colouring sheets to primary students' "I Love My Singapore, I Love My Food" creations, and secondary students' imaginative "Singapore on a Plate" interpretations, we were dazzled by all 300 spectacular submissions!

WINNING ENTRIES

PRESCHOOL



Man Shan, K2, PCF Sparkletots Preschool @ Kampong Chai Chee Blk 32

LOWER PRIMARY



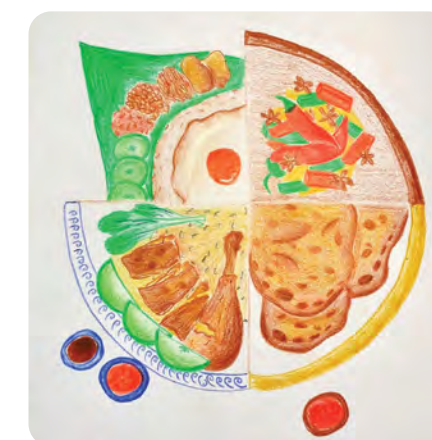
Phua Rui Xin Kylie, CHIJ (Katong) Primary

UPPER PRIMARY



Aina Binte Mohamed Faisal, Haig Girls' School

SECONDARY SCHOOL



Xu Jingjin, Assumption English School

**158,695
CLEAN PLATES
COUNTED**

From five primary schools in its first year, the Clean Plate Campaign now sees the participation and support of 73 schools from July to October last year. What a long way it has come!

OUR SIGNATURE EVENTS HEART ON WHEELS

Inaugurated in 2023, the largest national food donation drive-thru brings together the community for a good cause and raises awareness of food insecurity and volunteerism.



Unwavering support from Queenstown's Grassroots Adviser, Mr. Eric Chua, and Grassroots Organisations volunteers

On March 1 and 2, 2025, HEART ON WHEELS was held at Wearnes Automotive, continuing the tradition of community collaboration to support the less fortunate. More than 250 vehicles drove through over the weekend, helping us collect more than 33,000 food items and nearly \$50,000 to support communities in need amid rising food prices.

SPECIAL THANKS TO EVENT SPONSORS

- Knox
- KPMG
- McDonald's Singapore
- The Travelling Cow
- Wearnes Automotive Singapore

NOTABLE DONORS

- Artyzen Singapore
- Caxton (Singapore Pte Ltd)
- Edrington - \$20,000 worth of food
- Euromonitor
- Queenstown Grassroots Organisation - 13,709 food items

CAR GROUP SUPPORTERS

- Aston Martin Owners Club
- Bentley Owners Club
- Ducati
- Eagles Car Club SG
- Friends of Classic Singapore
- Harley-Davidson
- Lotus Cars Singapore
- Malaysia & Singapore Vintage
- Car Register
- Mustang Owners Club Singapore
- Planet Cooper
- Polestar
- Skoda Club Singapore
- Skulls of Nox MC
- S.M.T Charity Group
- Stradale SG
- Team CLA Singapore
- Volvo



OUR SIGNATURE EVENTS



OUR SIGNATURE EVENTS

PASSION BALL

Food from the Heart's annual fundraising gala has been a hallmark of Singapore's charity event calendar since 2004. Every year, esteemed guest attendees from various professional backgrounds and corporate sponsors help raise generous amounts of funds to support our mission.



**\$1.7 M
RAISED
— A NEW RECORD!**

Passion Ball returned on April 25, 2025, at The Singapore EDITION. Over 300 guests were enchanted by the vibrant Frida Kahlo-inspired theme and enjoyed a "Life in Full Bloom".

Immersed in the evening's full brilliance, guests contributed generously to show their support and belief in our cause. Passion Ball raised nearly \$1.7 million, a new record for our flagship fundraiser, which will support our food distribution programmes and operations.

Notably, the School Goodie Bag pledge raised \$250,000 to ensure that underprivileged children have consistent access to nutritious food, giving them brighter moments and promising futures.

OUR SIGNATURE EVENTS

SPECIAL THANKS TO

PRESENTING SPONSOR

- Audemars Piguet

ANGEL DONORS

- City Developments Limited
- Images in Motion

FRIEND DONORS

- Hong Leong Foundation
- Keystone Investors
- Mendis Aesthetics
- Mr & Mrs Mike & Emmanuelle Booker
- MS Amlin
- Mr Ronald P. Stride
- Mr Vincent Ang

SUPPORTED BY

- Tote Board

LEAD MEDIA PARTNER

- a+

AUCTION DONORS

- Audemars Piguet
- Automobile Club de Monaco
- Bonvests Holdings Limited
- Kerzner International
- Marriott International Asia Pacific (excluding China)
- Mr Melvin Poh
- Opera Gallery Singapore
- SGMC Capital
- Singapore Airlines
- The Macallan
- Tom Ford
- Unlisted Collection
- Zegna Group

IN-KIND DONORS

- Adagio Events
- Angra Wine & Spirit
- Código 1530 Tequila & Mezcal
- Firefly Photography
- RJ Paper
- Superskill
- The Singapore EDITION



OUR SIGNATURE EVENTS CHARITY GOLF TOURNAMENT

This annual fundraiser brings together golf enthusiasts and the business community to swing into action for a cause that matters, while bonding on the green.



The eighth edition of our Charity Golf Tournament was jointly held with Title Sponsor LHN Group on September 19, 2025, at The Singapore Island Country Club (SICC) for 144 golfers. With tremendous support from our sponsors, donors, and golfers, we raised over \$348,000!

As Eugene Yang, Chairman of the Organising Golf Committee, highlighted in his speech during the evening programme: “To our players and guests: your presence tonight sends a strong message that we will not allow food insecurity to go unnoticed or unchallenged. Our collective efforts today will ripple beyond the fairways, bringing nourishment, dignity, and hope to thousands of families. Not simply a day of golf, but also a lasting investment in humanity.”

“OUR LONG-TERM PARTNERSHIP WITH FFTH HAS BEEN INSTRUMENTAL IN FULFILLING OUR SOCIAL RESPONSIBILITY, CREATING MEANINGFUL DIFFERENCES AND POSITIVELY IMPACTING MANY LIVES.”

MR KELVIN LIM
Executive Chairman & Executive Director
LHN Limited

OUR SIGNATURE EVENTS

SPECIAL THANKS TO

TITLE SPONSOR

- LHN Group Pte Ltd

EAGLE SPONSOR

- SLB Development Ltd

HOLE-IN-ONE SPONSOR

- Performance Motors Limited

SUPPORTED BY

- Tote Board

BIRDIE SPONSORS

- Maybank
- MS Amlin

TEE SPONSORS

- Charles & Keith
- Centurion Corporation
- CIMB Bank Berhad
- Coliwoo
- Geoconsult Asia
- Globalpoint Far East Pte Ltd
- Luther LLP
- Planworth Global Factoring (S'pore) Pte Ltd
- Prime Partners
- ST Engineering
- Mr Sudarshan Venu
- Tan Chin Tuan Foundation
- Tong Seng Produce
- Wearnes Automotive Pte Ltd

FLIGHT - ORGANISATIONS

- Forvis Mazars in Singapore
- PAP Community Foundation
- Supported by Singapore Pools (Private) Limited
- Wise Singapore Pte Ltd
- Yan San Metals Pte Ltd

FLIGHT - INDIVIDUALS

- Mr Andrew Chan
- Mr Eugene Yap
- Mr Gary Eves
- Mr John Tee

- Mr Matteo Vezzosi
- Mr & Mrs Mike & Emmanuelle Booker
- Mr Siu Yow Wee
- Mr Tan Wee Cheong Wilson

DONATIONS

- Salesworks Pte Ltd

MEDIA PARTNER

- a+

OFFICIAL PHOTOGRAPHER

- Firefly Photography

IN-KIND SPONSORS

- a+
- Angra Wine & Spirit
- Audemars Piguet
- Big Ass Fans
- BOSS
- BYD
- Charles & Keith
- Cloversoft
- CornerStone Wines
- CouCou Restaurant
- DELL Technologies
- DMK
- Fairmont Singapore
- Four Star
- Glenfiddich
- Grand Hyatt Singapore
- Level 33
- LHN Group Pte Ltd
- Mitsubishi Electric
- Mr Ronald Ong
- Naked Finn
- Nomad Caviar
- Oatbedient
- Performance Motors Limited
- Scent by Six
- The Singapore Island Country Club
- TaylorMade
- TrulyNuts!, A White Lion Foods
- The Vintage Wine Club
- Yeo's



OUR SIGNATURE EVENTS

I CAN AWARD CEREMONY

Incepted in 2013, the I CAN Award recognises students under the **SCHOOL GOODIE BAG** programme, who have made significant **Improvements in Conduct & Behaviour, School Attendance and Non-academic activities** (such as involvement in community work, CCA, sports, arts, music or dance).



On March 18, 2025, nearly 50 students, accompanied by their families and teachers, gathered at Zhonghua Primary School for the I CAN Award Ceremony. Nominated by their teachers, this event celebrated our School Goodie Bag recipients for their resilience and dedication.

It was a joyful evening, highlighted by student-led performances and fun activities that brought everyone together. In total, 95 award recipients were awarded a trophy and \$100 in book vouchers, reinforcing the "I CAN" spirit and inspiring youth to uplift and support one another with kindness.



OUR SIGNATURE EVENTS TOY BUFFET

At this annual carnival-like event, children from lower-income families are treated to games, yummy treats, and at least three toys of their choice to take home! Each year, a theme is carefully chosen for the children, ages 5-13, to fully immerse themselves in the experience while inspiring positivity and encouraging them to dream and pursue their goals.



On November 14, 2025, Toy Buffet took place at the Institute of Technical Education (ITE) Central College. Under this year's theme, "Colour Chronicles: Choose A Hue, Discover You!", we created a vibrant space for exploration and self-discovery for 2,000 children from lower-income families, together with close to 1,000 corporate, student, and individual volunteers.

We were honoured to have Senior Parliamentary Secretary for the Ministry of Social and Family Development and Ministry of Law, Mr Eric Chua, to officially launch Toy Buffet 2025 with Mr Aw Kim Geok, Director of School of Electronics and Info-Comm Technology from ITE Central College, and our Board Chairman, Mr Ronald P. Stride;

Board Director, Mr Chong Ik Wei; and CEO, Mr Robin C. Lee.

This year we raised close to 16,000 toys – both pre-loved and brand new – from corporate partners and the public. Each toy is beautifully gift-wrapped and comes with a handwritten message from the toy donor for the recipient.

At the heart of Toy Buffet, we want to deliver a message of love and hope. The event could not have been possible without the generous support of our corporate and school partners, donors, and volunteers who share our commitment to nurturing a kinder and more inclusive Singapore.

OUR SIGNATURE EVENTS

SPECIAL THANKS TO

EVENT PARTNERS

Official Design Partner: Design Bridge and Partners
Official Logistics Partner: Singapore Post Limited
Official Storage Partner: Work + Store
Venue Host: Institute of Technical Education Central College

Special thanks to the Asia Toy and Play Association for their invaluable contribution.

CASH DONORS

- Deutsche Börse Group
- Loomis Sayles Investments Asia Pte Ltd
- Meiden Singapore Pte Ltd
- OUE
- Rio Tinto
- ZEISS Singapore

IN-KIND DONORS

- Artyzen Singapore Hotel
- Bernice Brow Artistry
- Ferrero Asia Pacific
- Ikano Private Limited
- Malaysia Dairy Industries Pte Ltd
- OCBC
- Sanrio Southeast Asia Pte Ltd
- Singapore Post Limited
- The LEGO Group
- URC Foods (Singapore) Pte Ltd

TOY BOOTH ADOPTERS

Corporate

- Adyen Singapore
- Bank of Singapore
- Carizon Pte Ltd
- Clyde & Co with the Singapore Corporate Counsel Association
- Coliwoo
- Deliveroo Singapore & Sheng Siong
- Dell Technologies
- DHL Express Singapore Pte Ltd
- Edrington Singapore Pte Ltd
- Edwards Lifesciences (Singapore) Pte Ltd
- EY
- Four Star Industries Pte Ltd
- HAL Completions Mfg Pte. Ltd (Sustainability Committee)
- Hyatt International Holdings - Asia Pacific Pte. Ltd
- ING Bank N.V., Singapore Branch
- International Flavors & Fragrances (Greater Asia) Pte Ltd



OUR SIGNATURE EVENTS

SPECIAL THANKS TO (CONT'D)

TOY BOOTH ADOPTERS (CONT'D)

Corporate (CONT'D)

- Keystone Investors Pte Ltd
- Loomis Sayles Investments Asia Pte Ltd
- Nefful Singapore Holdings Pte Ltd
- OUE
- Rotary Club of Singapore
- Singapore Land Group Limited
- The British Club
- Veson Nautical Pte Ltd
- World Wide Technology
- ZEISS Singapore

School

- Henry Park Primary School
- ITE College Central
- Nanyang Technological University
- Temasek Polytechnic

CORPORATE VOLUNTEER

TOY AMBASSADORS

Corporate

- Artyzen Singapore Hotel
- Bank of Singapore
- BP Singapore Pte Ltd
- Bridgestone Asia Pacific
- Coca-Cola
- Clyde & Co Clasis Singapore Pte Ltd
- Dell Technologies
- HP PPS Asia Pacific Pte Ltd
- Maybank
- National Australia Bank Limited
- OCBC
- OUE
- Sanrio Southeast Asia Pte Ltd
- SATS
- Singapore Airlines
- Singapore Corporate Counsel Association
- Singapore Land Group
- UBS
- UOB

School

- ITE Central College
- Temasek Junior College Leo Club
- Temasek Polytechnic

TOY DONATIONS

Toy Donation Drives (Corporate)

- Baker Technology Limited
- Bio-Rad Laboratories (Singapore) Pte Ltd
- Bridgestone Asia Pacific
- Barghest Building Performance Pte Ltd
- Clyde & Co Clasis Singapore Pte Ltd
- Conrad Centennial Singapore and Conrad Singapore Orchard
- CrowdStrike Singapore Pte Ltd
- Databricks Asiapac Unified Analytics Pte Ltd
- Design Bridge and Partners
- Deutsche Börse Group
- Expedia Travel Singapore Pte Ltd
- Giorgio Armani Singapore Pte Ltd
- Heguru Method Ptd Ltd
- HP PPS Asia Pacific Pte Ltd
- JasonSally Hairdressers
- Mass Merchandise Pte Ltd
- National Australia Bank Limited
- Raffles Quay Asset Management Pte Ltd
- Rio Tinto
- Singapore Corporate Counsel Association
- Singapore Post Limited
- Singapore Land Group Limited
- SITA
- SK Gas International Pte Ltd
- Suntec City
- Tetra Pak South East Asia Pte Ltd
- The Capitol Kempinski Hotel Singapore
- The Ritz-Carlton Residences
- Tiong Woon Corporation Holding
- Tower Research Capital (Singapore) Pte Ltd
- Visa Worldwide Pte Ltd
- Westin Hotel Singapore
- Wotton Kearney

Toy Donation Drives (School)

- APSN Chaoyang School
- Carpe Diem Springs Pte Ltd
- De La Salle School
- Dulwich College (Singapore)
- Elias Park Primary School
- Maris Stella High (Primary)
- MindChamps Holland V Champs
- North Spring Primary School
- PCF Sparkletots Preschool Ltd (@ Kampong Chai Chee Blk 409 EY)
- Singapore American School



OUR DONORS AND SPONSORS

With the help of our donors, sponsors, and partners, we are able to provide reliable, consistent, and sustainable food support to those in need, for as long as they need it. We are immensely grateful for their contributions which make our work possible.

COMMUNITY FOOD PACK PARTNERS

- Audemars Piguet Foundation
- Ministry of Social and Family Development
- SATS Ltd

COMMUNITY SHOP @ CHONG PANG PARTNER

- BNP Paribas Singapore

MARKET PLACE PARTNER

- NTUC FairPrice Co-operation Limited

SCHOOL GOODIE BAG PARTNER

- SIA Engineering Company

FRESH PRODUCE SPONSOR FOR COMMUNITY SHOPS (2023-2025)

- Resorts World At Sentosa Pte Ltd

LOGISTICS & TRANSPORTATION PARTNER

- Goldbell Foundation

CASH DONORS - ORGANISATION

\$100,000 AND ABOVE

- Ministry of Social and Family Development
- National Council of Social Service
- The Community Foundation Of Singapore

- Tote Board
- SIA Engineering Company

\$25,000 - \$99,999

- Applied Materials South East Asia Pte Ltd
- Audemars Piguet (Singapore) Pte Ltd
- Bloomberg Singapore Pte Ltd
- Charities Aid Foundation America
- City Developments Limited
- GlobalGiving Foundation Inc
- GoldenTree Asset Management
- ICG Plc
- Keystone Investors Pte Ltd
- LHN Group Pte Ltd
- Logoi Group Holdco Pte Ltd

- MS Amlin Asia Pacific Pte Ltd
- Myriad USA
- National Council of Social Service
- Pan Pacific Retail Management (Singapore) Pte Ltd
- Peng Hong Association
- SATS Ltd
- Singapore American School Limited
- South East Community Development Council
- SquarePoint Foundation
- Swiss Re Foundation

OUR DONORS AND SPONSORS

CASH DONORS - ORGANISATION (CONT'D)

\$10,000 - \$24,999

- BlackRock Fund
- Cargill Asia Pacific Holdings Pte Ltd
- Changkat Primary School
- Chew How Teck Foundation
- Chyau Fwu Wine & Spirits Pte Ltd
- Coleads Business Consultants Pte Ltd
- Geoconsult Asia Singapore Pte Ltd
- Healthy Great Pte Ltd
- Hong Leong Foundation
- Kulicke & Soffa
- Maybank Singapore Limited
- Mellford Pte Ltd
- Nuveen Investments Holdings Inc
- P/E Strategic Pte Ltd
- PAP Community Foundation
- Peng Hong Association
- Planworth Global Factoring (S'pore) Pte Ltd
- Providence College
- Rio Tinto Singapore Holdings Pte Ltd
- SLB Development Ltd
- Sycamore Philanthropy (PTC) Ltd
- The Ngee Ann Kongsi
- Tonghua Rice Co., Ltd
- Tower Capital Asia Pte Ltd
- Union Bancaire Privee UBP SA
- Vantage Automotive Limited
- Watawaste Pte Ltd
- Wearnes Automotive Pte Ltd
- William and Lena Lim Trust

\$5,000 - \$9,999

- Advario Singapore Limited
- Angles World Pte Ltd
- BioMedix Singapore Pte Ltd
- C S Tay Foods Pte Ltd
- Charles and Keith Family Fund c/o UBS SymAsia IPC Fund
- CIMB Bank Berhad
- Coliwoo Hostels Pte Ltd
- Forvis Mazars LLP
- Global Charitable Fund
- Globalpoint Far East Pte Ltd
- Goldman Sachs Gives (UK) Plumtree
- Indian Ocean (Straits) Foundation Limited
- Kerry Consulting Pte Ltd
- King Baudouin Foundation
- Laser Printing Industries Pte Ltd
- Loomis Sayles Investments Asia Pte Ltd
- Luther LLP
- Mayer Marketing Pte Ltd
- Primepartners Corporate Finance Pte Ltd
- Resmed Asia Pte Ltd
- RSM SG Assurance LLP
- Singapore Pools (Private) Limited
- St Engineering Defence Aviation Services Pte Ltd
- Sun Da Rice International Pty. Ltd
- Tong Seng Produce Pte Ltd
- Unigold International Pte Ltd
- Yan San Metals Pte Ltd

CASH DONORS - INDIVIDUAL

\$100,000 AND ABOVE

- Elaine A Saverin

\$25,000 - \$99,999

- Ang Hong Guan
- Anil Thadani
- Christopher Franck
- Claudio Nuno De Castro Ribeiro
- Karthikeyan Somasundaram
- Knut Unger
- Oliviero Bottinelli
- Paul Hickman
- Paul Tseng
- Phua Boon Huat
- Robert Michael Kilgour Booker
- Rohan Mendis
- Ronald P. Stride
- Yvonne Chua

OUR DONORS AND SPONSORS

CASH DONORS - INDIVIDUAL (CONT'D)

\$10,000 - \$24,999

- Anoop Singh Sagoo
- Chong Ik Wei
- Danny Koh Thong Meng
- Karen Fawcett
- Kuan Say Ngoh
- Lee Lay Hien Isaac
- Lo Siew Kuan, Kevin
- Low Ah Moey
- Lucas Wang
- Manraj Singh Sekhon
- Merle Allan Hinrich
- Michael Brenninkmeijer
- Mukesh Valiram
- Mustafa Yavuz
- Sanjay Gupta
- Sherman Kwek Eik Tse
- Shirley Goh Siaw Ling
- Tan Ker Vin
- Tan Siew Tin
- Vicky Hwang
- Zhu Jian

\$5,000 - \$9,999

- Andrew Chan Kin Wah
- Blake Michael John Warwick
- Chang Yeh Hong
- Cheong Wei Kok Bernard
- Chua Khoo Su, Jason
- Chua Yu Zhan
- Cynric Ho Jun Kai
- Eu Hock Leong, Raymond
- Eves Gary Gerard Godfrey
- Goh Kok Yong
- Huang Xiaoning
- Jiang Yunfeng
- Kwek Eik Sheng
- Lai Wei Chin
- Lauren
- Liu Xuan
- Loh Chin Hua
- Lynette Teng Gek Hong
- Matteo Vezzosi
- Ng Bee Lan
- Ng Say Hann
- Ng Wei Yong
- Oh Boon Hui Stella
- Ong Boon Peng
- Oskar Sigl
- Pang Ai Chee
- Rashmi Dubier
- Robert Rosen
- Shirley Fong
- Stephanie Ong Choo Lian
- Su Jiaxian
- Sudarshan Venu
- Tan Tee Yong
- Tham Yoke Meng
- Wong Hiu Yu
- Yap You Jin Eugene

\$2,000 - \$4,999

- Afiq Noor
- Afroze Begum Binte Abdul Mohamed
- Aishwarya Prabhat
- Alek Indra
- Alok Alerick Maxim Pinto
- Amos Hilary Mok Liang
- Andre Marcel Bally
- Astrie Sunindar Ratner
- Au Pui Har
- Beaud Sylvain
- Bernard Tay
- Brenninkmeijer-De Winter Veronique Maria
- Brian Dennis Groebusch
- Carla Cecilia Teoxon Carlos
- Chai Eduard Anthony
- Chan Fei Tsui Joyce
- Chan Hui Ching Isabelle
- Chan Kam Seng
- Chan Keng Kit
- Chan Lylyn Ly Lyn
- Chan Say Moi
- Chan Weng Tuck Fabian
- Chan Xian Ren Benedict (Zeng Xianren)
- Chan You-Jin
- Chan Zhao Zhi
- Chang Mei Hi
- Charanjeet Singh
- Chau Catriona Hui-En
- Chen Huijuan
- Chen Li Gang
- Chew Lee Tuck, Don (Zhou Lida)
- Chew Mui Fong
- Chia Kim Huat
- Chia See Sin
- Chiam Bon Yeak
- Chiew Hseng Loong James
- Chin Hsiang Lee Jonathan
- Ching Kian Fah
- Chionh Siok Bee
- Choi Hoi Lun Helen
- Chong Kok Keong
- Chor Wei Ping Daniel
- Choy Yuen She
- Christopher James Thomas
- Chua Ai Lian
- Chua Eng Tai Johnny
- Chua Hock Meng
- Chua Hui Phing
- Chua Wan Ni, Cheryl
- Chui Tau Siong
- Clarinda Chor-Yin Tjia-Dharmadi
- Claudia Marianne Frankie Khoo
- Colin Maximilian Rozario
- Colin Tan Zhi Tai
- Couse Anthony Charles Philip
- Dayna Ang Hui Shan
- Delia Lenander
- Derek Lim Tao Wei
- Desmond Gregory Chong Teck Jin
- Dharmo Soejanto
- Dinesh Senan
- Ding Woan Chee
- Eio Shan Shan
- Emily Tampi
- Foo Yuek Shuan
- Fung Lim
- Galven Tan
- Gamage Dilanka Roshan Kariyawasam
- Gan Cheong Weei
- Ganesh Natarajan
- Gao Yujing
- George Lee Lap Wah
- Gilbert Madhavan
- Goh Choi Fong
- Goh Jock Ann
- Goh Thiat Soo
- Goh Zhi Kai
- Grosliere
- Gunasegaran R
- Guo Xiuling
- Guok Suan Choo
- Gwee Yi Xin
- Han Kit Kwong
- Han Seng Juan
- Han Tock Lee

OUR DONORS AND SPONSORS

CASH DONORS - INDIVIDUAL (CONT'D)

\$2,000 - \$4,999 (CONT'D)

- Harsh Wardhan Modi
- Heng Ching Kiang
- Ho Miew Ling
- Ho William Yip Wan
- Hosein Nakhoda
- How Andrew
- Hui Kai Tung
- Indira Pant
- Ishti
- Jadallah Steinman
- Jayabalan Vijayakumar
- Jeffrey Chua Choa
- Jek Kian Yee
- Jerome Marie Gilles Walter
- John Phua
- John Tee
- Joseph Paul Kennedy
- Kam Juinn Huar
- Kang Mae Jiun, Adeline
- Karen Lim Wei Ling
- Karthikeyan Shanmuganathan
- Keith Koh
- Kenneth Ona
- Kho Wei Jun Gabriel
- Koay Yin Tin
- Koh Bee Leng
- Koh Liang Wee
- Koh Siew Lan
- Koh Yan Yew Gershon
- Krishna Kutty Vasanthi
- Kuah Siau Hian
- Kuah Wan Keng
- Lam Yue Ren
- Laurina Saliot
- Lawrence Wong Teck Boon
- Lee Chew Seng
- Lee Chin Meng
- Lee Geng Yu
- Lee Lea Meng
- Lee Michael Mcqueen
- Lee Shay Liang Li Xueliang
- Lee Tian Tee
- Lee Wenhui Alicia
- Liao Chia Chun
- Liao Zhengjie
- Liem Sian Yang
- Lim Cheng Yap
- Lim Ek Tie @Bahari Karim
- Lim Fung Hwee
- Lim Hong Gek
- Lim Jin Kiat
- Lim Ping Ping, Patricia
- Lim Poon Chong
- Lim Puay Joo
- Lim Siew Hwee Angeline
- Lim Soo Khim
- Lim Thee Hwee Theresa
- Lim Wee Ling Pamela
- Lim Yong Chye Lawrence
- Liu Hongjiang
- Liu Jialin
- Liu Martha Lina
- Loh Kim Kang David
- Loh Su Ming, Yvonne
- Loh Yeow Liang Benjamin
- Lok Kok Ghee
- Louis Chan Yong Wah
- Low Hwee Chua
- Lucas Wang Chong
- Lucy Chung
- Mahesh Buxani
- Marcellinus Hermanus Maria Smits
- Maricon Macandili Recto
- Melissa Lim Hui Hui
- Mohamed Ansar S/O K A Mohamed Nisar
- Mohamed Nasri Bin Mohamed Salleh
- Moi Boon Sing
- Muhammad Adam Bin Mohamed Yazid
- Myint Hlaing Hlaing
- Nambi Azhagan Vannia Perumal
- Narasimha Raju Pusapati
- Navin Bafna
- Neo Shu Hui
- Ng Bee Jun
- Ng Chee Peng
- Ng Chor Hoon
- Ng Eng Hong
- Ng Hak Hong
- Ng Hui Min (Huang Huiming)
- Ng Joon Hui
- Ng Mary
- Ng Nai Ping
- Ng Teng Hui, Connie
- Ng Wei Kok
- Ng Yew Peng
- Ng Yong Leon Danny
- Ngo Chun Yong Andrew
- Nikolaos Stavrakakis
- Nirmala N
- Norsalha Binte Mohamad
- Nurul Ain Binte Mohamad Ibrahim
- Oliver Balmelli
- Ong Chin Huat Steven
- Ong Chong Ghee Mark
- Ong Hui Xian, Julia

- Ong Hwee Yong
- Ong Jonathan Jun Kai
- Ong Kong Young
- Ong Li Li
- Ong Poh Lam
- Ong Sok Hoon Catherine
- Ong Wee Kiat David (Wang Wejie)
- Oscar Mico
- Pascal Marie Georges Rey Herme
- Paul Kan Hwei Mok
- Paulina Bohm
- Pauline Goh Ah Hong
- Pay Han Yang
- Penaloza Merwille Berongoy
- Phillip Thomas
- Plim
- Poh Leong Kwee
- Queh Li Yong, Timothy
- Quek Imm Lee
- Quek Mui Yong
- Quek Swan Jet Ferdinand
- Quek Teng Chong
- Rachamalla Anoop Kumar
- Rasyidah Binte Yeap Jamal
- Rebecca Koh Mei Li
- Roslan Bin Jumaat
- Sabrina Sng Kwan Eng
- Sam Ng Wei Hing
- Sandy Liang Yuen Ting
- Saqr Al Mohannadi
- Sarjeet Kaur Dhillon
- See Kum Thong Americ
- Selvadurai Noelle Chitrani
- Seow Kok Yong, Alice (Xiao Guorong, Alice)
- Shannon Lim
- Shawn Hew
- Sherman Chen Chiang Wei
- Siew Jie Ling
- Sim Jing Kai, Jonathan
- Sim Si Ling Serena
- Sim Tze-Chian Benny
- Siu Yow Wee
- Sng Shen Chai Jack
- Soh Hui Ying Nikki
- Soh Seok Wah
- Soh Shiyin
- Soh Siew Hoon Coreen (Su Xiuyun Coreen)
- Soh Sim Chuan
- Song Meiling
- Soo Yuk Min
- Soon Heng Shi

CASH DONORS - INDIVIDUAL (CONT'D)

\$2,000 - \$4,999 (CONT'D)

- Soon Wee Keat Mathew
- Soraya Tasha D/O Mohammad Reza Vojodi
- Srikala Seshadri
- Stephen Donnelly
- Steve Goh Poh Cheng
- Steven Paul Mcbain
- Subhas Gopalakrishnan
- Suresh S/O Poologanathan
- Swapnil Vasant Mhasde
- Sze Chun Chau
- Tai Yang
- Tam Kam Keong
- Tam Wan Xuan
- Tan Bee Lan
- Tan Boon Kian Billy
- Tan Chin Aik
- Tan Eng Hua
- Tan Eng Ngoh Audrey
- Tan Goon Hoon
- Tan Helen
- Tan Hock Wu
- Tan Kah Wee
- Tan Khiaw Ngiap James
- Tan Kian Seong
- Tan Kwang Hwee
- Tan Li Sen
- Tan Li Xin Zeena
- Tan Rui Wen
- Tan Seang Beng
- Tan Soon Kiat Sebastian
- Tan Swee Chuan
- Tan Sze Mei
- Tan Tuck Choy
- Tan Wee Yong
- Tan Wei Song
- Tan Yann Chong
- Tan Zhi Yi Fabian
- Tang Jun
- Tang Miao Ting
- Tang Teck Wei
- Tay Bee Lian
- Tay Chui Guek
- Tay Kia Hui Joanna
- Teh Wen Jun Kenneth
- Teng Chiew Yen
- Teo Chew Lee
- Teo Kai Ling
- Teo Peck Yen
- Teoh Chin Hwee Winson
- Teoh Pei Pei
- Than Pyei Phyo
- Thee Chia Chyi
- Tho Gea Hong
- Tien Weiming, Thaddeus
- Timothy Ian Malcolm Angus
- Tobias Boonstoppel
- Toh Jun Jie Benjamin
- Toh Lay Hong
- Trent Alexander Iliffe
- Tung Chai Sia
- Vani Ashokan
- Vinod Savio
- Wan Chee Meng
- Wang Shuai
- Wang Xinyi Hannah
- Wei Yue Cheong
- Welkar Karan Vikram
- Wen Jiajie
- Whyte Ronald Dennis
- William Elwood Steinman
- Wong Chia Yu
- Wong Kum Hoe
- Wong Siaw Ching
- Wong Sze Wei
- Wong Van-Tse Benjamin Leo
- Wong Wai Tong
- Wong Ying Lei Eleanor
- Wong Yuet Peng
- Wong Yuhua
- Wu Haiyan
- Xiao Xiaowa
- Yam Hoe Soon, Lester
- Yap Wee Yan
- Yee Fong Geraldine Chen
- Yeo Kheng Suan
- Yeo Pek Hui Venessa
- Yeoh Siok Hian Joanna
- Yew Boon Sia
- Yong Wei Lin
- York Ling Qiu Yuling Aleka Yaw
- Yuchinkong
- Yuen Wei Yi Gerard
- Yum Kah Hing
- Zeng Shihan

OUR DONORS AND SPONSORS

OUR DONORS AND SPONSORS

DONATIONS-IN-KIND

BREAD RUN PARTNERS

- Anas Bakery Holdings Pte Ltd
- Anatta Restaurant
- Andaz Singapore
- Artipico Atlier
- Bake Inc Pte Ltd
- Bakes & Bites
- Belly Good Bakehouse
- Bengawan Solo
- Bethel Confectionery
- Bread & Co. - Micro Bakery
- BreadFresh
- BreadTalk Group Pte Ltd
- Butter Town
- Caffè Pralet by Creative Culinaire Academy
- Commonwealth Concepts Pte Ltd
- Conrad Orchard Singapore
- Country Brot by Four Leaves
- Crazy Good Minimart Pte Ltd
- Crowne Plaza Hotel
- Délifrance Singapore Wholesale Pte Ltd
- Dohca Bakery
- Epi D'or Bakery by Four Leaves
- Everiday Foods Pte Ltd
- Flourish Bakehouse
- Four Leaves Pte Ltd
- Four Seasons Hotel
- Gardenia Foods (S) Pte Ltd
- Good Old Bakery
- Grand Hyatt
- Hong Kao Liao Li
- Marina Bay Sands Pte Ltd
- Montroux Patisserie Pte Ltd
- Muyuu Bakery
- Nick Vina Artisan Bakery
- Ohfoo Bakery
- Olsen Bakehouse
- Omzyn Cake
- Pan De Marie
- Prima Food Pte Ltd

CORPORATE AND OTHER FOOD DONORS

- 1FSS Pte Ltd
- Abbott Laboratories (Singapore) Private Limited
- Accudyne Industries Asia Pte Ltd
- Acer Computer (Singapore) Pte Ltd
- Advance Group Singapore
- Agency for Science, Technology and Research
- AIA Singapore
- AiDA Technologies Pte Ltd
- All Market Singapore Pte Ltd - Vita Coco Company
- Allied Container Services Pte Ltd
- Aloft Singapore Novena
- Alton Aviation Consultancy
- American Women's Association
- Amgen Singapore Manufacturing
- Amitabha Buddhist Centre
- Ampol Management Services Pte Ltd
- Applied Materials South East Asia Pte Ltd
- Artyzen Singapore
- Asahi Beer (Asia Pacific Pte Ltd)
- AspenTech Pte Ltd
- Atos Information Technology (Singapore) Pte Ltd
- Auditor-General's Office
- Autodesk Asia Pte Ltd
- Avantor VWR Singapore Pte Ltd
- Bank of America
- Barclays Investment Bank
- Barkath Stores (Private) Limited
- Basic Military Training Centre Singapore
- Becton Dickinson Medical(s) Pte Ltd
- Besi Singapore Pte Ltd
- Bio-Rad Laboratories
- Biohackk International Pte Ltd
- BlackRock (Singapore) Limited
- Bloomberg Singapore Pte Ltd
- BMW Group Asia
- BNP Paribas Singapore Branch
- BOC Aviation
- Building And Construction Authority
- C.H. Robinson Freight Services (S) Pte Ltd
- Canberra Community Club
- Caxton (Singapore) Pte Ltd
- Celanese Singapore Pte Ltd
- Celestica Electronics (S) Pte Ltd
- Central Provident Fund Board (CPF Board)
- Certis CISCO Security Pte Ltd
- CH Offshore Ltd
- Changi Airport Group (Singapore)
- Chemoscience Pte Ltd

- PrimaDelí Bakeries
- Pullman Hotel Orchard Singapore
- RedMart
- Resorts World Sentosa
- Salt Bakes
- San Ming Pte Ltd
- Sembawang Confectionery
- Shangri-La Singapore
- Sunshine Bakeries
- Swissotel Singapore
- The Fullerton Hotel Singapore
- The Ritz-Carlton Singapore
- The Sandwich Shop
- Tiong Bahru Bakery
- TOUS les JOURS Singapore
- Vbread Ang Mo Kio
- Wheat Bakery
- Yi Jia Bakery Café
- Yugoslavia Bakery

- Cheng Qing Engineering
- Chevron Phillips Chemicals
- Chong Pang Community Club
- Chubb Singapore Pte Ltd
- CIMB Bank
- City Wide (S) Pte Ltd
- Coda Payments
- Collins Aerospace
- Conrad Centennial Singapore
- Cook South East Asia Pte Ltd
- Corteva Agriscience Singapore
- Courtyard by Marriott Singapore Novena
- Craft Union Pte Ltd
- Crisll Ratings Limited
- Cytiva ASEAN
- Daiwa House Asset Management Asia Pte Ltd
- Datadog Singapore
- DBS Bank Ltd
- DDM Association
- Defence Science and Technology Agency (DSTA)
- DELL Singapore
- Delta Air Lines, Inc
- Dentsu Asia Pacific Pte Ltd
- Dewhurst Singapore Pte Ltd
- DHL Singapore
- Dnata Singapore Pte Ltd
- DRW Singapore Pte Ltd
- DSV Air & Sea Pte Ltd

OUR DONORS AND SPONSORS

DONATIONS-IN-KIND (CONT'D)

CORPORATE AND OTHER FOOD DONORS (CONT'D)

- Durapower Technology (Singapore) Pte Ltd
- Dynasafe Technologies Pte Ltd
- DyStar Singapore Pte Ltd
- Edelman Singapore Pte Ltd
- Edrington Singapore Pte Ltd
- EM Services Pte Ltd
- Empower Partners Singapore
- Energy Market Company Pte Ltd
- Etika Pte Ltd
- Euromonitor International
- Everton Park Food Drive
- Faculty of Science, Dean's Office National University of Singapore
- FairPrice for Business
- FastParkNCharge Pte Ltd
- Ferrero Asia Pacific Pte Ltd
- First Sentier Group
- FIS Singapore
- Flexco Pte Ltd
- Four Points by Sheraton Singapore
- Four Seasons Hotel Singapore
- Fujitsu Asia Pte Ltd
- Fullshare Group Pte Ltd
- German Centre
- GIG International School
- Grand Copthorne Waterfront Hotel Singapore
- Groupe SEB Singapore Pte Ltd
- GXO Logistics Asia Pacific Pte Ltd
- HAL Completions Mfg Pte Ltd
- Halliburton Completion Technology and Manufacturing Center
- Henatenn Holdings Pte Ltd
- Heritage Ceramics (APAC) Pte Ltd
- Hershey Asia Pacific Pte Ltd
- Hexacon Construction Pte Ltd
- HMH (Singapore) Pte Ltd
- HMM (SG) Pte Ltd
- Holiday Inn Express & Suites Singapore Novena
- Hong Da Marine Offshore Pte Ltd
- Horizons HVL Singapore Pte Ltd
- Housing & Development Board
- HP Singapore
- HRnetGroup
- Hyatt International Holdings
- IBM Singapore Pte Ltd
- IBCB - Industrial and Commercial Bank of China
- Ichor Systems Singapore Pte Ltd

- iFAST Corporation Ltd
- IFS Capital Limited
- India International Insurance
- Indicia Worldwide
- Infineum Singapore LLP
- Informatica S.E.A. Pte Ltd
- Ingeus
- Intellectual Property Office of Singapore (IPOS)
- International Workplace Group
- Intuitive Surgical Pte Ltd
- IQIVIA Singapore
- Iron Mountain Singapore Pte Ltd
- ITE Headquarters
- JAS Singapore
- Jet Aviation (Asia Pacific) Pte Ltd
- Ji Yun Tan Temple
- Johnson & Johnson Pte Ltd
- Js Jireh & Associates Pte Ltd
- Jump Trading Pacific Pte Ltd
- JW Marriott Singapore South Beach
- Kajima Overseas Asia
- Kellogg Brown & Root Asia Pacific Pte Ltd (KBR)
- Keppel Bay Tower
- Keppel Corporation
- Keppel South Centre
- Keystone Investors Pte Ltd
- Kim San Tze Temple Association
- Kinokuniya Book Stores of Singapore Pte Ltd
- Koh Chong Ho Company (Pte) Ltd
- KPMG Services Pte Ltd
- Leica Camera Asia
- LG Electronics Singapore Ptd Ltd
- LHN Group
- Lonza Biologics
- Louis Dreyfus Company Asia Pte Ltd
- Lumen Technologies Singapore Pte Ltd
- LVMH Fragrances & Cosmetics (Singapore) Pte Ltd
- LYS Energy Solutions Pte Ltd
- Majestic Fast Ferry
- Mani Retreat Association
- Marriott International Inc
- Maybank Singapore Limited
- Mercer Marsh Singapore
- Mercure Singapore On Stevens
- Metro Holdings Pte Ltd
- Microsoft Operations Pte Ltd

- MicroStrategy Singapore
- Millennium 3 Building Products Pte Ltd
- Ministry of Defense of Singapore
- Ministry of Home Affairs
- Ministry of Law
- Ministry of National Development
- Ministry of Social and Family Development
- Ministry of Trade & Industry
- MOE, CPDD1, Sciences Branch
- Morgan Stanley
- Motorola Solutions
- Motorcycle Club Skulls of Nox
- MS Amlin Singapore Pte Ltd
- MUFG Bank Singapore
- N.Tech Products Pte Ltd
- Nan Hua High School
- Nanyang Beverage Pte Ltd
- Nanyang Junior College
- NATS (Hong Kong)
- NB Solution Pte Ltd
- NetApp Singapore Pte Ltd
- Netflix Singapore
- Neuberger Berman Singapore Pte Limited
- NMG Consulting Singapore
- No18 Capitol (International Workplace Group)
- Nomura Singapore
- Novotel Singapore On Stevens
- Now Health International (Singapore) Pte Ltd
- NTUC Fairprice Co-operative Ltd
- NTUC Income Insurance Singapore
- Nu Skin Enterprises Singapore Pte Ltd
- Nuveen Singapore Pte Ltd
- Nuvei Singapore Pte Ltd
- Outside Pte Ltd
- OCBC Bank
- Ocean Financial Centre
- Oil Spill Response Limited
- Oracore Group Headquarter Office
- Oracle Corporation Singapore Pte Ltd
- Orchard Turn Developments Pte Ltd
- Oshkosh-JLG Technology Equipment Private Limited
- Otis Elevator Singapore
- P/E Strategic Pte Ltd

OUR DONORS AND SPONSORS

DONATIONS-IN-KIND (CONT'D)

CORPORATE AND OTHER FOOD DONORS (CONT'D)

- Pacific Logistics Group (PLG)
- Partners Group (Singapore) Pte Ltd
- Patience Capital Group
- PCF Sparkletots (Punggol)
- Peng Hong Association Singapore
- Phillips 66 International Trading Pte Ltd
- PM Link Pte Ltd
- Prophet
- PSC Corporation Ltd
- Pullman Hotel Singapore
- Qualtrics Singapore
- Queenstown Grassroots Organisation
- Queenstown RN
- QuidelOrtho Singapore
- RE & E Enterprises Pte Ltd
- Renaissance Services Of Asia Ptd Ltd
- Republic of Singapore Air Force
- Resort World at Sentosa Pte Ltd
- Richwell Global Forwarding Pte Ltd
- Rio Tinto
- Ritz-Carlton
- RMS Marine & Offshore Service (Singapore) Pte Ltd
- RPC Premium Law
- RSM SG Assurance LLP
- Russell Reynolds Associates Singapore
- S&P Global Ratings
- SAF - Ferry Terminal
- SAF - Singapore Armed Forces
- Salesworks Singapore
- Samsung Asia Pte Ltd
- SCDF 4th Division HQ
- Schenker Singapore
- Scotia Bank
- Seaco Asia Pte Ltd
- Seatown Holdings International Pte Ltd
- SG OGS Pte Ltd
- SIA Engineering Company
- Signature by Regus
- Sime Darby Motors
- Singapore Airlines
- Singapore American School
- Singapore Department of Statistics
- Singapore Indian Development Association
- Singapore Institute of Management
- Singapore Marriott Tang Plaza Hotel
- Singapore Police Force (Home Team School Of Criminal Investigation)
- Singapore Police Force (Operations Dept)
- Singapore Red Cross
- Singlife Financial Advisers
- Sita Information Networking Computing (Asia Pacific) Pte Ltd
- South32 Marketing Office
- Space Furniture Singapore
- Spaces @ 111 Somerset
- Spaces @ Clarke Quay
- Spaces @ Paya Lebar Quarter
- Spencer Ogden Pte Ltd
- Sprinklr Singapore
- ST Engineering Ltd
- ST Microelectronics Singapore
- Standard Chartered Bank
- Starbucks Singapore
- Starwood Customer Engagement Centre Pte Ltd
- Subsea 7 Singapore
- SUMCO Singapore Pte Ltd
- Suntec City
- Suntory Beverage & Food Singapore
- Swiss Re Asia Private Limited
- Swiss Re Foundation
- T1 Glass System
- Taishin International Bank Singapore
- TEAM LEWIS - Singapore PR & Marketing Agency
- Temasek Holding Pte Ltd
- Tencent Singapore
- Tetra Pak Singapore
- TEVA Pharmaceutical Investments Singapore Pte Ltd
- Thai Edible Oil Co Ltd
- The Beatback Project
- The Body Shop International (Asia Pacific) Pte Ltd
- The National Environment Agency
- The Ritz-Carlton Residences
- The Ritz-Carlton, Millenia Singapore
- The Seletar Mall Pte Ltd
- The Singapore EDITION Hotel
- The Singapore Island Country Club
- The St. Regis Singapore
- The Waterina
- The Westin Singapore
- The Work Boulevard
- Tiffany & Co.
- Tong Seng Produce Pte Ltd
- TOTO Asia Oceania Pte Ltd
- Travel + Leisure Co.
- Tuas Power Supply Pte Ltd
- UBS Singapore
- Uncle DiDi's
- Unity Growth Agency (INCOME Insurance)
- UOB Group
- Valvoline Global
- VF Singapore Overseas Services Pte Ltd
- Virtuos Holdings
- Visa Worldwide Pte Limited
- Vodafone Enterprise Singapore Pte Ltd
- Volvo Car Singapore
- W Singapore - Sentosa Cove
- Watsons Singapore (Head Office)
- We Are Social Pte Ltd
- Wearnes Harley-Davidson of Singapore
- Wells Fargo Bank NA, Singapore Branch
- Woh Hup Building
- WongPartnership LLP
- Workato Singapore
- Yit Hong Pte Ltd
- Yokogawa Engineering Asia Pte Ltd
- ZEISS Singapore
- Zhang Zetong Fan Club
- Zheng Hua Tian Sheng Gong (Temple)

OUR DONORS AND SPONSORS

DONATIONS-IN-KIND (CONT'D)

SCHOOLS AND INSTITUTIONS

- Ace @ Work Childcare (JE288B)
- Anchor Green Primary School
- Ang Mo Kio Secondary School
- Anglican High School
- Anglo-Chinese Junior College
- Angsana Primary School
- Bartley Secondary School
- Beacon Primary School
- Bedok Green Secondary School
- Brighton Montessori Sunset
- Bukit Batok Secondary School
- Canadian International School Singapore
- Catholic High School (Primary)
- Cedar Primary School
- CHIJ Our Lady of The Nativity
- CHIJ St Nicholas Girls' School
- Chongfu Primary School
- Chongzheng Primary School
- Chung Cheng High School (Main)
- Damai Primary School
- Dunearn Secondary School
- Elias Park Primary School
- EtonHouse International Pre-School Claymore
- Fernvale Primary School
- Gan Eng Seng Secondary School
- GIG International School
- Greenridge Primary School
- Henry Park Primary School
- Holy Innocents' Primary School
- Integrated International School
- International French School (Primary)
- International French School (Secondary)
- ITE College Central
- Kent Ridge Secondary School
- Kheng Cheng School
- Kuo Chuan Presbyterian Secondary School
- Little Paddington Preschool @ Bartley
- Little Paddington Preschool @ Kovan
- Little Talent Childcare Centre
- Maha Bodhi School
- Meridian Secondary School
- Methodist Girl's School
- MindChamps @ Changi Business Park
- MindChamps @ Tampines Plaza
- MindChamps @ Tampines Point
- MOE Kindergarten @ Huamin
- MOE Kindergarten @ Sengkang Green Preschool
- Montfort Secondary School
- My First Skool @ 113 Alkaff Crescent
- My First Skool @ 135 Simei Street 1
- My First Skool @ 161 Jalan Teck Whye
- Nanyang Girls' High School
- Nanyang Polytechnic
- Ngee Ann Polytechnic Food AID Club
- New Town Secondary School
- Northbrooks Secondary School
- Northshore Primary School
- NTU EEE - School of Electrical and Electronic Engineering
- NTU University Advancement Office
- NUS CDE Angels
- Odyssey The Global Preschool - Dempsey Road
- Odyssey The Global Preschool - Orchard
- Odyssey The Global Preschool - Wilkinson Road
- Odyssey The Global Preschool - Loyang
- Opera Estate Primary School
- Palm View Primary School
- Paya Lebar Methodist's Girl School (Primary)
- PCF Sparkletots @ Bedok Reservoir-Punggol Blk 713
- PCF Sparkletots @ Braddell Heights Blk 246
- PCF Sparkletots @ Fengshan Blk 126
- PCF Sparkletots @ Jalan Kaya Blk 987C
- PCF Sparkletots @ Kampong Chai Chee
- PCF Sparkletots @ Keat Hong Blk 484
- PCF Sparkletots @ Punggol North Blk 410A
- PCF Sparkletots @ Punggol Shore Blk 174D
- PCF Sparkletots @ Sengkang Central Blk 210
- PCF Sparkletots @ Serangoon Blk 125
- PCF Sparkletots @ Tampines East Blk 205
- PCF Sparkletots @ Yew Tee Blk 608
- PCF Sparkletots @ Zhenghua Blk 550B
- Pei Hwa Secondary School
- Pei Tong Primary School
- Peicai Secondary School
- Punggol Green Primary School
- Punggol View Primary School
- Rosyth School
- School of the Arts
- Seng Kang Green Primary School
- Seng Kang Primary School
- Serangoon Secondary School
- Singapore American School
- Singapore Institute of Technology (SIT)
- Singapore Management University
- Singapore Polytechnic
- Skool4Kidz Preschool @ Bukit Batok West Scape
- Small Wonder Preschool @ Buona Vista
- Soka Pre-school
- Springdale Primary School
- St Anthony's Canossian Primary School
- St Joseph's Institution
- St. Andrew's Secondary School
- Star Learners @ 587 Sembawang Place
- Star Learners @ CCK
- Star Learners @ Thomson
- Star Learners @ Yishun
- Sunflower Preschool @ Dakota
- Tanglin Trust School
- Tanjong Katong Primary School
- Temasek Polytechnic
- The Little Skool-House @ Republic Polytechnic
- The Little Skool-House @ Temasek Polytechnic
- The Little Skool-House @ Alexandra Hospital
- Tots & Teddies Preschool
- Unity Primary School
- Valour Primary School
- Westwood Secondary School
- Woodgrove Primary School
- Woodlands Primary School
- Woodlands Ring Primary School
- Woodlands Ring Secondary School
- Yumin Primary School
- Zhangde Primary School

AUDITED FINANCIAL INFORMATION 2025

AUDITED FINANCIAL INFORMATION 2025

INCOME & EXPENDITURE STATEMENT

INCOME	2025 S\$	2024 S\$
Outright Donations	8,310,315	7,058,739
Fundraising Events	1,737,507	1,607,738
Charitable Events	288,532	215,943
Food Purchase Account	1,570,745	1,685,843
Donation in kind	2,053,254	2,501,601
Grant	374,950	539,581
Other Income	637,557	569,514
TOTAL INCOME	14,972,860	14,178,959
EXPENDITURE		
Outright Donations	1,795,584	1,539,879
Food donations distributed	2,085,787	2,505,003
Fundraising Events	334,311	379,810
Charitable Events	414,515	250,387
Food Purchase Account	5,007,824	4,024,072
General and Administrative	3,015,839	2,799,846
TOTAL EXPENDITURE	12,653,860	11,498,997
Net Operating Surplus / (Deficit)	2,319,000	2,679,962
NON-OPERATING INCOME		
Utilisation of Funds	-	-
Amortisation of Deferred Funds	65,314	74,628
TOTAL NON-OPERATING INCOME	65,314	74,628

Surplus of Income over Expenditure **2,384,314** **2,754,590**

STAFF WITH REMUNERATION ABOVE \$100,000

\$100,001 and \$200,000* 4 4

*includes basic salary, annual wage supplement, allowances, and employer's contributions to Central Provident Funds.

Food from the Heart is governed by the Board of Directors which is the final authority and has overall responsibility for policy making and governance. Board members are volunteers and receive no monetary remuneration for their contribution.

Food from the Heart has in place a Conflict of Interest and Confidentiality Policy Statement. Members of the Board of Directors and employees must declare if they have a conflict of interest regarding any business before the Board.

Food from the Heart is committed to the highest standards of openness, probity and accountability. The organisation has adopted a Whistleblowing policy to enable employees of the Company to raise concerns internally and at a high level and to disclose information which individual believes show malpractice or impropriety.

BALANCE SHEET

	Note	2025 S\$	2024 S\$
ASSETS			
Non-Current Assets			
Plant and Equipment		1,015,409	619,691
Total Non-Current Assets		1,015,409	619,691
Current Assets			
Other receivables		329,737	151,309
Deposits		90,655	95,332
Prepayments		98,866	127,227
Inventory	Note 1	348,037	328,143
Cash & Bank Balances			
Operating		13,992,043	14,595,480
Reserves	Note 2	3,000,000	2,753,974
Designated	Note 3	6,325,867	4,046,943
Total Cash & Bank Balances		23,317,910	21,396,397
Current Assets		24,185,205	22,098,408
TOTAL ASSETS		25,200,614	22,718,099
FUNDS			
Accumulated Funds		20,379,884	17,625,294
Current Year Earnings		2,384,314	2,754,590
TOTAL FUNDS		22,764,198	20,379,884
NON-CURRENT LIABILITIES			
Deferred Capital Grants	Note 4	75,158	140,472
Lease Liabilities		390,656	-
Provision for reinstatement costs		183,000	183,000
Total non-current liabilities		648,814	323,472

BALANCE SHEET (CONT'D)

	Note	2025 S\$	2024 S\$
CURRENT LIABILITIES			
Other Payables and Accruals		1,010,183	703,964
Lease Liabilities		186,724	130,671
Deferred Income	Note 5	590,695	1,180,108
Total Current Liabilities		1,787,602	2,014,743
TOTAL LIABILITIES		2,436,416	2,338,215
TOTAL FUNDS AND LIABILITIES		25,200,614	22,718,099

NOTES TO THE FINANCIAL STATEMENTS

Note 1: Amount comprises foods as at year end

Note 2: Reserve Policy

Food from the Heart's objective in managing fund is to maintain a level of reserve that enables the company to continue operating within at least twelve months period of time.

This reserve is used to fund for working capital, any unexpected expenditures or events, and shortfalls in income. The Board of Directors reviews the company's reserve policy level on regular basis.

Note 3: Consists of funds designated for use in food purchase

Note 4: Deferred Capital Grants

Care and Share Matching Grant received for approved supported usage is accounted for in respective fund accounts. Amount utilised for the purchase of plant and equipment is transferred to deferred fund account and amortised over the useful lives of the related assets to match the depreciation of the assets through amortisation of deferred fund. Amount utilized for other approved supported usage is transferred to deferred fund account and recognised as income through utilisation of fund.

Note 5: Deferred Income

Deferred income comprises of voluntary donation income designated for purchasing of food, programmes and events usage in the future.

The full set of audited financial statement is available at foodfromtheheart.sg

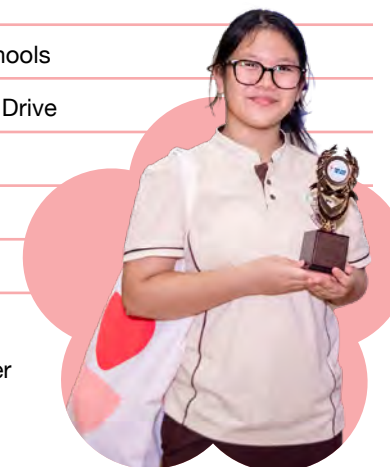
THE YEAR AHEAD

Our FY26 budget is an investment in the continuity of Food from the Heart's mission, shared purpose, and the organisation as a whole. Looking ahead, we plan to continue to enhance the quality and nutritional value of our food support by \$5 to \$8 per household through 2027. The focus will continue to be on opening Community Shops in more estates and expanding the School Goodie Bag programme to tertiary institutions.

OUR EVENTS CALENDAR

Fundraising, food donation drives, and community-based events and activities

MONTH	
January	Chinese New Year Food Donation Drive
March	HEART ON WHEELS Food Donation Drive-Thru and online food bundle sponsorship campaign I CAN Award Ceremony
April	Passion Ball
May	Community Shop @ Bedok South Opening, Launch Event and Food Donation Drive
July	Clean Plate Campaign in Schools
August	National Day Food Donation Drive
September	Charity Golf Tournament
October	World Food Day
November	Toy Buffet
December	Giving Week by NVPC Volunteer Appreciation Dinner



CONCLUDING REMARKS

The success of our events reflects the active support and commitment of individuals and corporations towards our mission and goals. Through our collective efforts in fundraising, food donation drives, and community-building initiatives, we highlight the importance of food security for all Singaporeans. These efforts also create meaningful opportunities to engage the public, volunteers, and beneficiaries, while inspiring individuals, businesses, and organisations to contribute and create impact together.

FOOD IS LOVE WHO DO WE HELP?

Food from the Heart works with grassroot organisations and welfare homes to reach out to those who need our support. Our beneficiaries include lower-income individuals and families who are residents of welfare homes, as well as those staying in the housing estates. Their monthly per capita income typically falls below \$800*.



HOW CAN YOU HELP?

Join us in sharing hope and nourishing lives. Here are some ways you can get involved to fight food insecurity in Singapore:

DONATE

SUPPORT OUR MISSION WITH EVERY GIFT

Cash donations are eligible for a 2.5x tax deduction. You can also donate food items to support families and seniors

Scan to donate



VOLUNTEER

YOUR TIME MAKES A REAL DIFFERENCE

Join a Bread Run, pack food at our warehouse, or lend your skills through volunteering. Whatever your age or ability, there's a way to help

Scan for opportunities to help



SHARE

STAY CONNECTED AND ADVOCATE FOR US

Follow us on social media and share our work and upcoming events with your friends and loved ones

Scan for our digital touchpoints



*We raised the qualifying monthly household per capita income (PCI) for our beneficiaries from \$690 to \$800 starting January 2025 to help more individual and families cope with rising costs of living and inflation.

READY. SET. DONATE RIGHT!

Before donating food items, consider:



NUTRITION

Look out for the healthier choice logo and items higher in nutrients!

CONVENIENCE

A few 1kg packs of rice can be given to one family but one bag of 10kg rice is harder to distribute among a few families.

FOOD SAFETY

Check the packaging and that the expiry date is three months or more.

THEIR PRIDE

Give something you would be happy to receive yourself to put a smile on their face!

FOOD WISH LIST

We require all donations to be dated at least

3 MONTHS BEFORE EXPIRY

We prefer to receive food items that are

HALAL-CERTIFIED

RICE 1-2.5 KG

COOKING OIL 1L

CANNED MEAT SARDINES, FRIED DACE, CHICKEN, PORK

CANNED VEGETABLES/MUSHROOMS

CANNED SOUP

EVAPORATED/CONDENSED MILK

BREAD SPREADS

BISCUITS 200 G - 500 G

INSTANT BEVERAGES, IN SACHETS MALT, TEA, COFFEE

INSTANT NOODLES

RICE VERMICELLI

VOLUNTEER APPRECIATION DINNER

SPECIAL THANKS TO OUR IN-KIND DONORS

- Asahi
- Charles & Keith
- Clean Conscience
- Commonwealth Concepts
- DMK
- Ferrero Asia Pacific
- Oatbedient
- Singapore Kindness Movement
- Suntec City
- The Prestigious
- Tiong Bahru Bakery
- Zappy



MEET THE TEAM



HOPE (from left to right):

Anna Seow, Chun Mei Qi, Fathin Samar, Victor Zhang, Gwen Chng, Julia Ong, Carryn Koh, Brenda Ho, Robin C. Lee (CEO), Fiona Manini, Shahira Maya Sahar, Timothy Lai, Mohamad Zuraimi Muchi

NOURISH (from left to right):

Vivian Ho, Isabel Tan, Jaslin Koh, Jasmine Tan, Justin Lim, Katherine Chin, Kelvin Lee, Khoo Foong Yin, Mathiaravinthan Mathivanan, Ong Shu, Sasikala Puspanathan, Sim Mei Zhi, Tan Xing Yao, Wu XiChao

A FEW WORDS FROM OUR CEO

2025 MARKED OUR SG60 CELEBRATION.

To encourage a greater sense of collective responsibility and community care, our nation's social compact was refreshed through a shift from a "me" to a "we" society. Amidst global tensions and conflicts, the call to "*Building Our Singapore Together*" emphasises the need for unity and resilience in our community. Our commitment has inspired many Singaporeans to step forward: strengthening our community, preserving our culture, and looking out for one another.

To our Board of Directors, donors, sponsors, partners, volunteers, and friends, thank you for your unwavering support. Together, we can shape a more caring and inclusive Singapore. Join us in this mission: volunteer, donate, or partner with us as we continue *Sharing Hope and Nourishing Lives*.

Robin C. Lee

Find out more at [foodfromtheheart.sg](https://www.foodfromtheheart.sg)



 [foodfromtheheartsg](https://www.instagram.com/foodfromtheheartsg)

 [foodheart](https://www.facebook.com/foodheart)

 [foodfromtheheart](https://www.linkedin.com/company/foodfromtheheart)

 [foodfromtheheartsg](https://www.tiktok.com/@foodfromtheheartsg)

130 Joo Seng Road #03-01 Singapore 368357

T: 6280 4483

E: info@foodheart.org

Registration No: 200721064R | IPC: 000634